

Conservation Agriculture: Principles, Practices, and Productivity Outcomes

Ashish Kundu^{1*}, Naval Kishore Meena², Lucy Kumari³

¹M.Sc. Scholar, Department of Agronomy, Chaudhary Charan Singh University, Meerut

²Ph.D. Scholar, Department of Horticulture (Fruit Science), RCA, MPUAT, Udaipur-313001, Rajasthan

³Ph.D. Scholar, Department of Horticulture, PG College of Agriculture,

Dr Rajendra Prasad Central Agriculture University Pusa Bihar

*Corresponding Author E-mail: kundu2003ashish@gmail.com

Received: 14.10.2025 | Revised: 23.11.2025 | Accepted: 17.12.2025

ABSTRACT

Addresses critical challenges of soil degradation, water scarcity, and climate change while enhancing productivity. This review examines the fundamental principles, implementation practices, and productivity outcomes of CA systems globally. The three core principles—minimum mechanical soil disturbance, permanent soil organic cover, and species diversification—form the foundation of CA. Evidence demonstrates that CA improves soil health, increases carbon sequestration, enhances water use efficiency, and reduces greenhouse gas emissions. Adoption studies reveal yield improvements up to 28%, cost reductions up to 10%, and net profit increases up to 43% in smallholder systems. Despite proven benefits, adoption rates vary globally, with significant potential for expansion in Asia-Pacific and developing regions. This review synthesizes current research to provide comprehensive insights into CA's role in achieving sustainable agricultural intensification.

Keywords: Conservation agriculture, zero tillage, crop residue management, soil health, sustainable farming.

INTRODUCTION

Modern agriculture faces unprecedented challenges including soil degradation, declining organic matter, groundwater depletion, biodiversity loss, and increasing greenhouse gas emissions (FAO, 2024). Conventional tillage-based systems have contributed significantly to these problems,

with intensive mechanical soil disturbance accelerating erosion, disrupting soil structure, and releasing stored carbon into the atmosphere. Conservation Agriculture (CA) has emerged as a viable alternative that addresses these challenges while maintaining or improving agricultural productivity (Kassam et al., 2023).

Cite this article: Kundu, A., Meena, N.K., & Kumari, L. (2025). Conservation Agriculture: Principles, Practices, and Productivity Outcomes, *Curr. Rese. Agri. Far.* 6(6), 25-37. doi: <http://dx.doi.org/10.18782/2582-7146.285>

This article is published under the terms of the [Creative Commons Attribution License 4.0](https://creativecommons.org/licenses/by/4.0/).

Conservation Agriculture is defined by the Food and Agriculture Organization as a farming system based on three interconnected principles: minimum mechanical soil disturbance, permanent soil organic cover, and species diversification through crop rotations and associations (FAO, 2024). Unlike conventional agriculture that relies on intensive tillage, CA systems minimize soil disturbance, leaving crop residues on the field surface and implementing diverse crop rotations to enhance ecological functions and economic resilience.

The global conservation agriculture market reached USD 13.6 billion in 2024 and

is projected to expand at a compound annual growth rate of 8.2% through 2033, demonstrating increasing recognition of sustainable farming practices worldwide (DataIntel, 2025). This growth reflects mounting pressure on agricultural systems to produce more food with fewer resources while mitigating environmental impacts. CA adoption has expanded at an average rate of more than 7 million hectares per year over the past decade, indicating growing farmer and government interest in sustainable intensification strategies (Kassam et al., 2023).

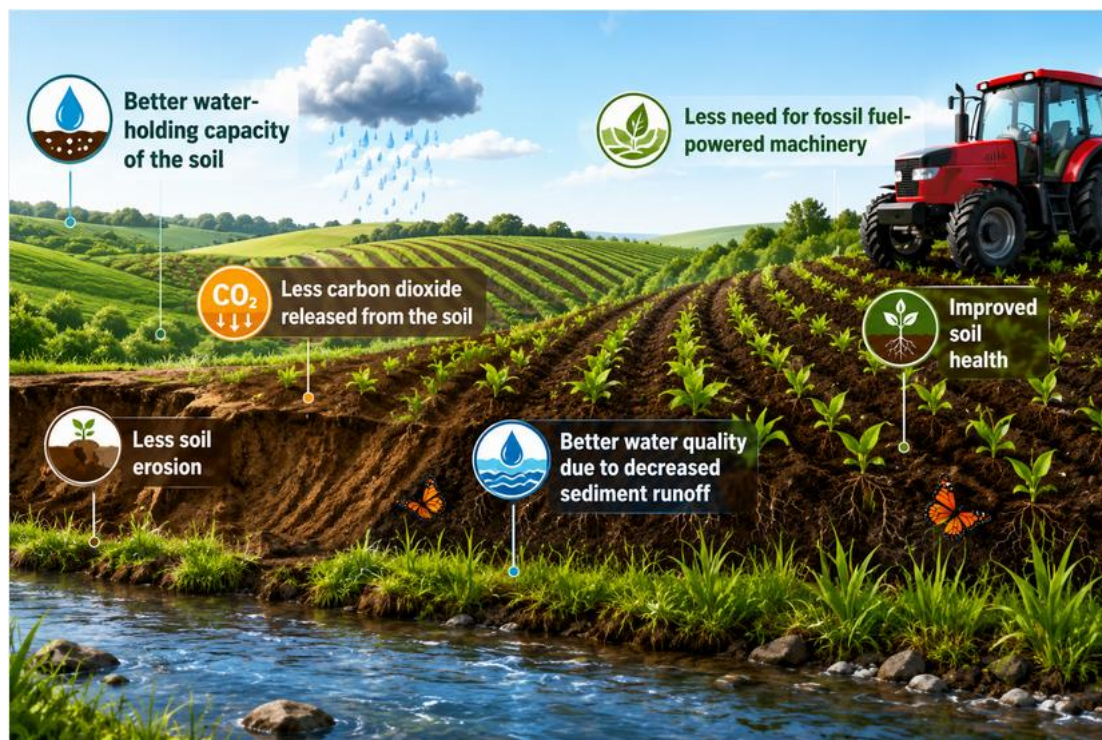


Figure 1: Benefits of No-Till Farming in Conservation Agriculture Systems

This review synthesizes current research on conservation agriculture principles, implementation practices, and productivity outcomes. We examine the scientific basis for CA practices, evaluate evidence on soil health improvements and yield responses, analyze economic and environmental benefits, and assess global adoption patterns and future prospects. Understanding these dimensions is critical for advancing CA adoption and achieving sustainable agricultural development goals.

Fundamental Principles of Conservation Agriculture

Conservation Agriculture is built upon three core principles that function synergistically to restore and maintain soil health, enhance ecosystem services, and improve agricultural productivity (FAO, 2024). These principles represent a paradigm shift from conventional agriculture's reliance on mechanical soil manipulation to biological processes that build soil quality over time.

Principle 1: Minimum Mechanical Soil Disturbance

The first principle focuses on eliminating or drastically reducing mechanical soil disturbance through adoption of no-tillage or minimal tillage practices. Minimum soil disturbance is defined as limiting the disturbed area to less than 15 cm width or less than 25% of the cropped area, whichever is lower, with no periodic tillage exceeding these limits (FAO, 2024). This approach contrasts sharply with conventional tillage that inverts and pulverizes soil through plowing, harrowing, and multiple cultivation passes.

Zero tillage, the most advanced form of minimum disturbance, involves direct seeding into untilled soil with specialized equipment that creates narrow seed slots while leaving the soil structure intact. Research demonstrates that zero tillage reduces CO₂ emissions by 15-21%, decreases N₂O emissions by 31%, and lowers CH₄ emissions by 24.7% compared to conventional tillage (Page et al., 2023). These reductions occur because undisturbed soil maintains higher aggregate stability, reducing microbial decomposition of organic matter and limiting gas diffusion through soil pores.

Elimination of tillage preserves soil structure, particularly the three-dimensional pore network that facilitates water infiltration, gas exchange, and root penetration. X-ray computed tomography studies reveal that zero tillage reduces soil porosity by 33%, which leads to 21% reduction in potential CO₂ efflux through decreased aerobic respiration (Page et

al., 2014). The intact soil structure also supports diverse microbial communities and enhances soil biological activity, creating positive feedback loops that further improve soil health.

Economic benefits of minimal tillage are substantial. Farmers adopting no-till methods experience significant cost savings through reduced fuel consumption, machinery operation, and labor hours (Kelly Tillage, 2023). These savings directly improve farm profitability while reducing the carbon footprint of agricultural operations.

Principle 2: Permanent Soil Organic Cover

The second principle emphasizes maintaining permanent soil cover with crop residues, cover crops, or living mulches at a minimum of 30% coverage throughout the year (FAO, 2024). This organic cover serves multiple critical functions: protecting soil from erosion, moderating soil temperature and moisture, suppressing weeds, and providing continuous organic matter inputs that feed soil biological communities.

Crop residue retention on the soil surface creates a protective layer that shields soil from raindrop impact, reducing erosion and surface crusting while enhancing water infiltration (IRRI, 2024). The residue layer also moderates soil temperature fluctuations, creating more stable conditions for microbial activity and root growth. Research shows that residue mulching improves soil moisture retention by reducing evaporative losses, a critical benefit in water-limited environments (EOS, 2023).



Figure 2: Crop Residue Cover Providing Permanent Soil Protection

As residues decompose, they contribute organic matter to the soil, enhancing soil organic carbon (SOC) storage. Conservation agriculture practices promote carbon sequestration through enhanced soil micro-aggregation, deeper deposition of SOC in lower soil horizons, and reversal of soil degradation processes (Lal & Kimble, 1997). Studies document that CA systems increase soil organic matter, improve water retention capacity, and promote biodiversity, contributing to long-term agricultural sustainability while mitigating climate change (Kumar et al., 2024).

Permanent soil cover also provides weed suppression benefits, particularly important in direct-seeded systems. The mulch layer physically inhibits weed emergence while creating conditions favorable for allelopathic effects from decomposing residues. This reduces dependence on herbicides and manual weeding, lowering production costs and environmental impacts.

Principle 3: Species Diversification

The third principle involves diversifying cropping systems through rotations, intercropping, and integration of diverse plant species including legumes, deep-rooted crops, and cover crops (FAO, 2024). Crop diversity breaks pest and disease cycles, enhances nutrient cycling, improves soil structure through varied root architectures, and spreads economic and climatic risks across multiple crops.

Crop rotation differentially affects soil bacterial and fungal communities, enhancing microbial diversity and soil biological functions compared to continuous monoculture (Zhang et al., 2024). Different crops contribute varied organic matter quality and quantity, supporting diverse decomposer communities and nutrient cycling pathways. Legume inclusion in rotations provides biological nitrogen fixation, reducing synthetic fertilizer requirements and improving nitrogen use efficiency.

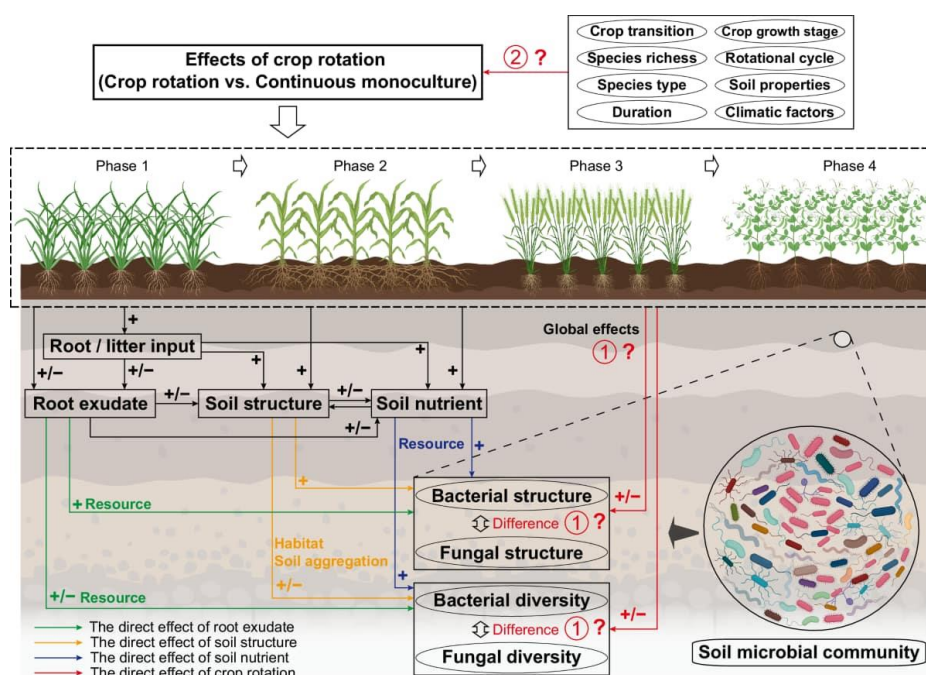


Figure 3: Crop Rotation Effects on Soil Structure and Microbial Communities

Global farmer surveys indicate that crop rotation is the most widely adopted sustainable practice, with 68% of farmers implementing rotations, followed by reduced or no tillage at 56% (McKinsey, 2024). The high adoption rate reflects crop rotation's versatility and

compatibility with various farming systems, from smallholder operations to large-scale commercial agriculture.

Diversification also includes temporal diversity through cover crops that occupy fields during fallow periods, providing

continuous living cover that captures solar energy, recycles nutrients, and maintains active soil biological processes. This continuous productivity maximizes resource use efficiency and ecosystem service provision throughout the year.

Conservation Agriculture Practices and Implementation

Successful implementation of conservation agriculture requires integrated management of multiple agronomic practices adapted to local soil, climate, and socioeconomic conditions. Key implementation practices include appropriate crop establishment methods, residue management strategies, nutrient management, weed control, and water conservation techniques.

Crop Establishment and Seeding Technologies

Direct seeding into untilled soil with residue cover requires specialized equipment that can penetrate residue layers, create adequate seed-soil contact, and achieve uniform seed placement at proper depth. No-till planters and drills feature coulters that cut through residues, furrow openers that create seed slots, and press wheels that ensure seed-soil contact. Precision in seed placement becomes critical in CA systems where germination conditions may differ from conventional tillage.

Strip tillage represents an intermediate approach where narrow strips are tilled for seed placement while leaving interrow areas undisturbed with residue cover. This practice is permitted in CA systems if the disturbed area remains below the 25% threshold (FAO, 2024). Strip tillage can facilitate adoption in situations where complete no-till faces technical or management constraints.

Residue Management Strategies

Managing crop residues effectively requires balancing the competing demands of soil cover, nutrient cycling, pest management, and subsequent crop establishment. Optimal residue retention rates depend on crop type, climate, and soil characteristics. In tropical environments with rapid decomposition, maintaining 30% cover may require higher

initial residue inputs than in temperate regions where decomposition proceeds more slowly.

Residue distribution affects uniformity of soil cover and subsequent crop emergence. Combine harvesters equipped with residue spreaders ensure even distribution across the field width. In situations with excessive residue loads, partial removal for livestock feed or other uses may be necessary to prevent interference with seed placement, though maintaining minimum 30% cover remains essential.

Mulching techniques involve spreading residues uniformly across the field surface to maximize soil protection benefits (EOS, 2023). This practice proves particularly beneficial for high-value crops like cotton, soybeans, and corn where erosion control, water conservation, and weed suppression provide significant yield advantages.

Nutrient Management in CA Systems

Conservation agriculture influences nutrient dynamics through reduced nutrient losses, enhanced nutrient cycling, and altered fertilizer requirements. Surface residue retention immobilizes nutrients during decomposition, particularly nitrogen and phosphorus, potentially creating temporary deficiencies for subsequent crops. Strategic nutrient management addresses these dynamics through adjusted fertilizer timing, placement, and rates.

Research on phosphorus management in CA systems shows that conservation agriculture increases system yield and phosphorus use efficiency when combined with appropriate fertilizer doses (Kumar et al., 2025). Residue retention enhances phosphorus availability over time through organic matter mineralization and improved soil biological activity that solubilizes bound phosphorus.

Nitrogen management requires attention to residue C:N ratios that influence immobilization-mineralization patterns. High C:N residues like cereal straws temporarily immobilize nitrogen, necessitating supplemental nitrogen application to prevent crop deficiency. Legume residues with low C:N ratios release nitrogen more readily,

reducing fertilizer requirements for subsequent crops.

Placement of fertilizers becomes critical in no-till systems where surface broadcasting may lead to nutrient stratification and reduced efficiency. Subsurface banding places nutrients in the root zone, improving uptake efficiency and reducing losses. Precision agriculture technologies enable variable rate fertilization based on soil and crop variability, optimizing nutrient use efficiency.

Weed Management Approaches

Weed control represents a primary challenge in CA adoption, particularly during transition from conventional tillage systems. Integrated weed management in CA combines cultural practices, mechanical methods, and judicious herbicide use. Permanent soil cover suppresses weed emergence through physical obstruction and allelopathic effects. Crop rotations and cover crops disrupt weed life cycles and create competitive conditions unfavorable to weed establishment.

Herbicides play an important role in CA systems, particularly for initial weed control before crop canopy closure. However, overreliance on herbicides raises concerns about environmental impacts, herbicide resistance development, and input costs. Research emphasizes integrating diverse weed management tactics to reduce herbicide dependence while maintaining effective weed control.

Water Conservation and Irrigation Integration

Conservation agriculture significantly enhances water use efficiency through multiple mechanisms. Residue cover reduces evaporative losses from soil surfaces, while improved soil structure enhances infiltration and water-holding capacity. These effects are particularly valuable in rainfed agriculture where water availability limits production.

Integration of efficient irrigation technologies with CA amplifies water conservation benefits. Drip irrigation delivers water and nutrients directly to crop root zones with minimal losses, achieving higher yields

while using less water, fertilizer, and energy (Green.Earth, 2023). The combination of CA soil improvements and precision irrigation represents optimal water management for intensive cropping systems.

Research demonstrates positive correlations between crop productivity and microbial biomass carbon in CA systems, as the soil microenvironment moderated by residue retention and reduced tillage optimizes soil temperature and moisture for both crop growth and microbial activity (Nature, 2024).

Productivity Outcomes and Economic Performance

Extensive research across diverse agroecological zones demonstrates that conservation agriculture can match or exceed conventional tillage productivity while providing superior economic and environmental outcomes. Understanding these productivity dimensions is essential for farmer adoption decisions and policy support.

Crop Yield Responses

Yield responses to conservation agriculture vary with crop type, soil conditions, climate, duration of CA practice, and management intensity. Meta-analyses reveal that no-till systems decrease global warming potential while maintaining crop yields, with no significant yield tradeoff at the global scale (Li et al., 2023). This finding contradicts earlier concerns that CA might sacrifice productivity for environmental benefits.

Long-term studies provide the most compelling evidence for CA productivity. Research on conservation agriculture under warming conditions shows that CA improves soil health and sustains crop yields compared to conventional agriculture, with benefits accumulating over time (Nature, 2024). The cumulative nature of CA benefits reflects gradual soil health improvements that enhance productivity stability and resilience.

Regional adoption studies from Bangladesh demonstrate substantial productivity gains when smallholder farmers implement CA. Farmers practicing CA technology achieved yield increases up to 28% for lentil, mustard, maize, and wheat while

simultaneously reducing production costs (Rahman et al., 2023). These outcomes reflect CA's capacity to enhance both land productivity and input use efficiency.

Variable rate technologies, adopted by 40% of farmers globally, optimize input application based on within-field variability, further enhancing productivity and profitability in CA systems (McKinsey, 2024). Precision agriculture technologies complement CA principles by matching inputs to crop requirements, minimizing waste and environmental impacts.

Economic Performance and Profitability

Economic analysis consistently shows improved profitability in CA systems through combined effects of reduced costs and maintained or increased yields. Bangladeshi smallholders adopting CA reduced human labor by up to 34%, seed use by 31%, fertilizers by 6%, pesticides by 32%, and total production costs by 10% (Rahman et al., 2023). Simultaneously, net profit increased by up to 43%, demonstrating substantial economic advantages.

Cost savings in CA systems derive primarily from eliminated tillage operations, reduced fuel and machinery costs, lower labor requirements, and decreased input needs. A single conventional tillage system may require 5-8 tractor passes for seedbed preparation, each consuming fuel and wearing machinery. No-till eliminates these passes, saving 60-80 liters of diesel per hectare in intensive systems.

Labor savings are particularly significant for smallholder farmers where labor availability constrains production. The 34% labor reduction documented in Bangladesh smallholder systems allows farmers to allocate labor to other productive activities or expand cultivated area without proportional labor increases (Rahman et al., 2023).

Profitability advantages extend beyond direct cost savings to include risk reduction and income stability. Conservation agriculture systems demonstrate greater yield stability under climatic extremes, reducing crop failure risk and income variability

(Kumar et al., 2024). This stability is economically valuable as it reduces farmers' exposure to catastrophic losses and improves creditworthiness.

Resource Use Efficiency

Conservation agriculture enhances efficiency in using water, nutrients, energy, and labor resources. Water use efficiency improvements range from 10-30% depending on climate and soil conditions, achieved through reduced evaporation, improved infiltration, and enhanced soil water storage capacity. These improvements are critical given increasing water scarcity in many agricultural regions.

Nutrient use efficiency increases in CA systems through reduced erosion losses, minimized leaching, enhanced biological nitrogen fixation with legume rotations, and improved soil organic matter that releases nutrients through mineralization. Phosphorus use efficiency studies show significant improvements when CA is combined with appropriate P management strategies (Kumar et al., 2025).

Energy efficiency gains in CA systems are substantial. Eliminating multiple tillage operations reduces diesel consumption by 40-60% in intensive systems. When combined with reduced irrigation requirements and lower input needs, total energy use per unit of production decreases significantly, improving economic margins and reducing carbon footprints.

Soil Health and Environmental Benefits

Conservation agriculture's environmental benefits extend beyond individual farms to provide ecosystem services including carbon sequestration, biodiversity conservation, water quality protection, and climate change mitigation. These benefits increasingly influence policy support and market recognition for CA adoption.

Soil Organic Carbon and Carbon Sequestration

Soil organic carbon accumulation represents one of CA's most significant environmental benefits. Conservation tillage enhances carbon sequestration through multiple mechanisms including enhanced soil micro-aggregation that

physically protects organic matter, deeper SOC deposition in lower soil horizons, and

reversal of degradation processes that accelerate carbon loss (Lal & Kimble, 1997).

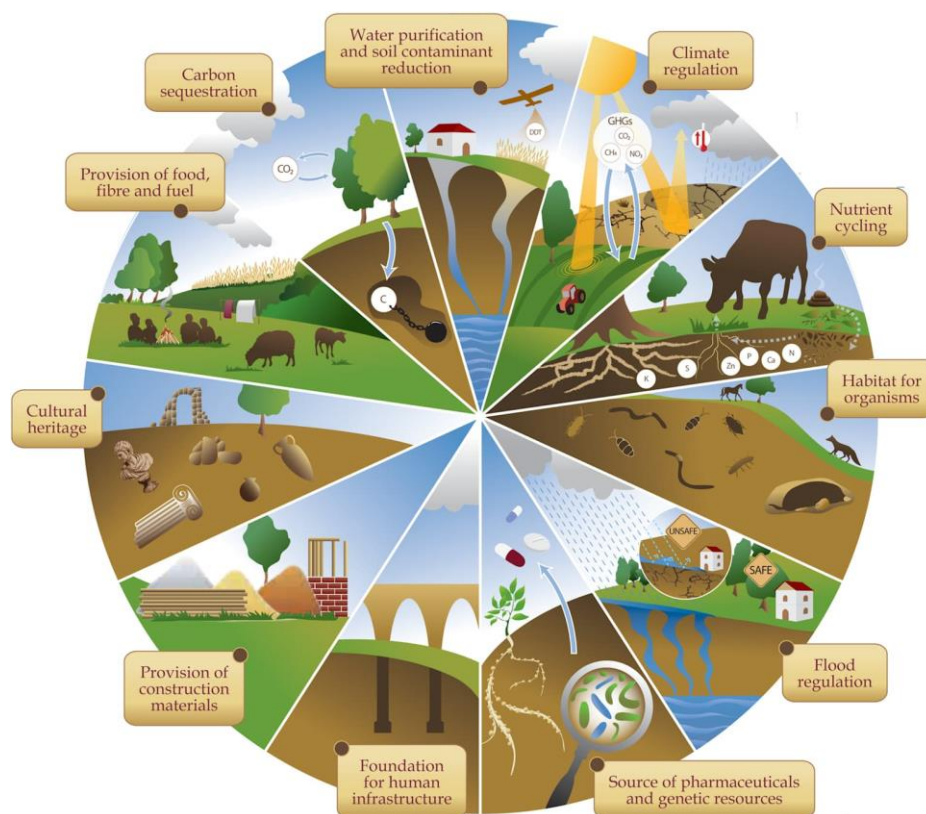


Figure 4: Soil Carbon Sequestration and Ecosystem Services in Conservation Agriculture

Carbon sequestration rates in CA systems typically range from 0.1 to 1.0 Mg C ha⁻¹ year⁻¹, with higher rates observed in tropical regions with longer growing seasons and greater biomass production. Long-term CA adoption builds soil organic carbon stocks that enhance soil fertility, water-holding capacity, and climate resilience while removing atmospheric CO₂.

Soil organic carbon improvements contribute to climate change mitigation through negative emissions, offsetting agricultural greenhouse gas production. The global conservation agriculture market's focus on carbon sequestration reflects growing recognition of agriculture's potential role in climate solutions (DataIntel, 2025).

Greenhouse Gas Emissions Reduction

Research demonstrates that no-till agriculture reduces net greenhouse gas emissions across the three primary agricultural GHGs: carbon dioxide, nitrous oxide, and methane. Zero tillage decreases CO₂ emissions by 15%, N₂O

emissions by 31%, and CH₄ emissions compared to conventional tillage, resulting in 26-31% lower global warming potential (Page et al., 2014; & Li et al., 2023).

The mechanisms driving these reductions involve complex interactions between soil physical, chemical, and biological properties. Reduced soil disturbance lowers CO₂ emissions by limiting exposure of organic matter to aerobic decomposition. The three-dimensional soil pore network modification by tillage significantly influences CO₂ and CH₄ flux, with denser no-till soil structure reducing gas diffusion and microbial respiration (Page et al., 2014).

Nitrous oxide emissions, a particularly potent greenhouse gas, decrease in no-till systems primarily through effects on microbial biomass carbon and soil moisture content. The improved soil structure and biological activity in CA systems optimize conditions that favor complete denitrification to N₂ rather than incomplete reduction to N₂O.

Water Quality and Erosion Control

Conservation agriculture provides critical water quality benefits through reduced erosion and nutrient runoff. Permanent soil cover protects soil from raindrop impact and water erosion, reducing sediment loads in waterways by 60-90% compared to bare, tilled soil. This sediment reduction also prevents associated transport of nutrients, pesticides, and pathogens that impair water quality.

Reduced tillage and improved soil structure enhance water infiltration, decreasing surface runoff and associated pollutant transport. Studies document 30-50% reductions in nutrient runoff from CA fields compared to conventional tillage, contributing to protection of downstream water resources from eutrophication.

Improved water quality benefits extend to groundwater protection. Enhanced infiltration in CA systems reduces surface runoff while biological activity in undisturbed soil promotes degradation of pesticides and other contaminants before they reach groundwater. These protective effects are particularly valuable in intensive agricultural regions where water quality degradation threatens drinking water supplies and aquatic ecosystems.

Biodiversity and Ecosystem Services

Conservation agriculture supports biodiversity at multiple levels from soil microorganisms to above-ground fauna. Reduced soil disturbance and permanent cover create stable habitats for soil organisms including earthworms, arthropods, and microorganisms that enhance ecosystem functions. Earthworm populations in long-term no-till systems often exceed those in tilled fields by 2-10 fold, reflecting improved habitat quality.

Microbial diversity benefits from CA practices that provide continuous organic matter inputs and reduce physical disturbance. Enhanced microbial diversity supports multiple ecosystem services including nutrient cycling, disease suppression, and soil structure formation. Research shows that CA with crop rotation differentially increases soil bacterial and fungal communities, enhancing overall

soil biological functioning (Zhang et al., 2024).

Above-ground biodiversity also benefits from CA adoption. Permanent soil cover and diverse crop rotations provide habitat and food resources for beneficial insects, pollinators, and wildlife. These biodiversity enhancements support integrated pest management through natural enemy populations that suppress crop pests.

Global Adoption Patterns and Regional Variations

Conservation agriculture adoption varies substantially across regions, reflecting differences in agricultural systems, policy support, technical capacity, and socioeconomic conditions. Understanding these patterns informs strategies for accelerating CA expansion in regions with high potential but low current adoption.

Current Global Adoption Status

The global conservation agriculture area has expanded steadily over the past two decades, growing at an average rate exceeding 7 million hectares annually (Kassam et al., 2023). This growth reflects increasing farmer recognition of CA benefits and expanding policy support from governments and international organizations.

Regional adoption patterns show significant variation. North America leads global CA adoption with approximately USD 4.5 billion market value in 2024, driven by widespread no-till adoption in the United States and Canada (DataIntel, 2025). The region benefits from advanced agricultural infrastructure, strong policy support, and high farmer awareness of sustainable practices.

Europe represents the second-largest regional market at approximately USD 3.7 billion in 2024, with the European Union's Common Agricultural Policy providing substantial incentives for CA adoption, particularly in France, Germany, and Spain (DataIntel, 2025). Policy support has been critical for driving adoption in regions where economic margins are narrower and transition challenges are more pronounced.

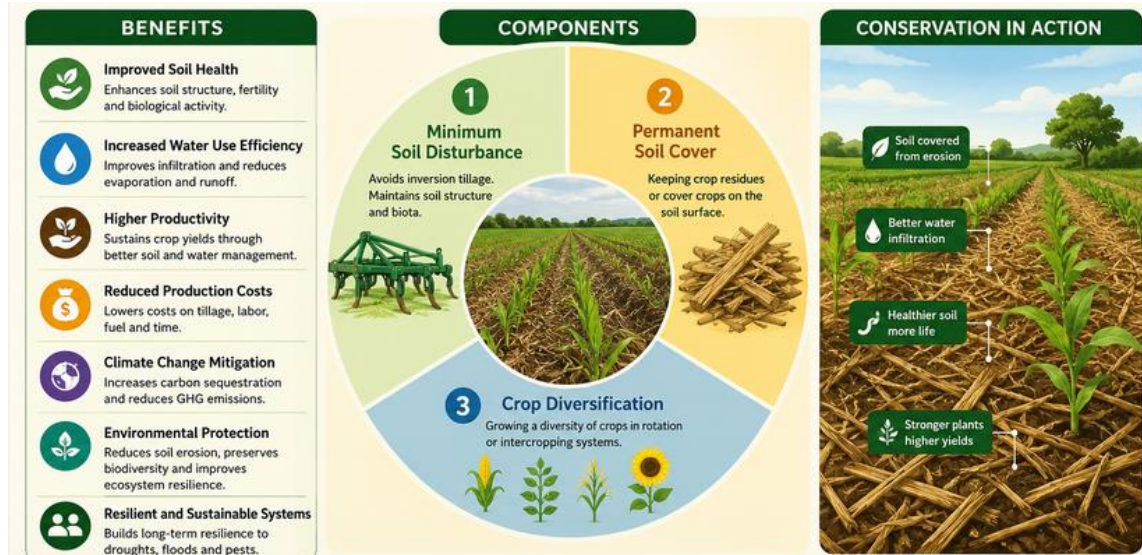


Figure 5: Benefits and Components of Conservation Agriculture Systems

The Asia-Pacific region shows the fastest growth potential, projected at 10.4% compound annual growth rate with market size of approximately USD 2.9 billion in 2024 (DataIntel, 2025). The region's vast agricultural base, growing food demand, and increasing government investment in sustainable agriculture drive this expansion. However, current adoption rates remain low across much of Asia, indicating substantial room for growth.

Latin America and Africa show steady but variable adoption. Countries like Brazil and Argentina have achieved significant CA adoption in large-scale farming systems, while smallholder-dominated regions face greater adoption barriers including limited access to appropriate equipment, technical knowledge, and credit for investment in CA technologies.

Adoption Drivers and Barriers

Multiple factors influence farmer decisions to adopt conservation agriculture. Economic motivations dominate adoption decisions, with cost savings, profitability improvements, and risk reduction serving as primary drivers. Survey data shows that 68% of farmers globally implement crop rotations and 56% practice reduced or no tillage, indicating substantial adoption of core CA principles (McKinsey, 2024).

Yield improvements and production efficiency emerge as the leading drivers for

adopting sustainable farming practices including CA. Farmers recognize that CA can enhance productivity while reducing input costs, creating compelling economic incentives for adoption.

However, significant barriers constrain CA adoption in many regions. Technical challenges include weed management difficulties during transition, need for specialized equipment, and limited technical knowledge about CA management. These barriers are particularly acute for smallholder farmers with limited access to information, credit, and appropriate technologies.

Socioeconomic barriers include tenure insecurity that discourages long-term soil investments, labor constraints during critical periods, and competing uses for crop residues including livestock feed and fuel. In regions where crop residues have significant alternative value, maintaining 30% soil cover requires trade-offs that may not be economically attractive.

Policy and institutional barriers include inadequate extension support, limited availability of CA equipment in local markets, and subsidy programs that inadvertently favor conventional practices. Addressing these barriers requires coordinated action across research, extension, policy, and private sectors to create enabling environments for CA adoption.

Smallholder Adoption Experiences

Smallholder farmers in developing regions face unique opportunities and challenges in CA adoption. Evidence from Bangladesh demonstrates that smallholder CA adoption delivers substantial benefits, with yield increases up to 28%, cost reductions up to 10%, and profit gains up to 43% (Rahman et al., 2023). These outcomes demonstrate CA's potential to improve food security and livelihoods for smallholder families.

However, adoption rates among smallholders remain low in many regions, particularly in sub-Saharan Africa and parts of Asia. Constraints include limited access to appropriate no-till seeders designed for smallholder scale, insufficient technical knowledge and extension support, competing demands for crop residues, and inadequate policy support.

Successful smallholder CA programs emphasize participatory learning approaches, farmer-to-farmer knowledge exchange, innovative equipment solutions adapted to smallholder needs, and integrated support addressing both technical and socioeconomic constraints. These programs demonstrate that smallholder CA adoption is feasible when appropriate support systems are in place.

Future Prospects and Research Needs

Conservation agriculture continues evolving as research advances understanding of system dynamics, technologies improve, and policies adapt to support sustainable intensification goals. Several emerging trends and research priorities will shape CA development over coming decades.

Climate Change Adaptation and Mitigation

Conservation agriculture's role in climate change adaptation and mitigation will increasingly drive adoption decisions and policy support. Research demonstrates that CA improves soil health and sustains crop yields under long-term warming compared to conventional agriculture, with benefits accumulating over time (Nature, 2024). These adaptive benefits become increasingly valuable as climate variability and extreme events intensify.

Carbon markets and payment for ecosystem services programs may provide additional economic incentives for CA adoption. However, current carbon program participation remains low at 12% of farmers globally, primarily due to insufficient economic incentives and limited awareness (McKinsey, 2024). Developing viable carbon market mechanisms that adequately compensate farmers for sequestration services represents an important policy priority.

Technology Integration and Precision Agriculture

Integration of conservation agriculture with precision agriculture technologies offers significant potential for optimizing system performance. Variable rate technologies, adopted by 40% of farmers globally, enable site-specific management that matches inputs to crop requirements while adhering to CA principles (McKinsey, 2024). Further technology development in sensors, robotics, and decision support tools will enhance CA system efficiency and attractiveness.

Digital agriculture platforms can facilitate CA adoption by providing farmers with real-time information on weather, crop development, pest pressure, and market conditions. These tools support better decision-making while reducing risks associated with CA transition.

Research Priorities

Key research needs include developing region-specific CA systems adapted to local conditions, breeding crop varieties optimized for CA environments, improving weed management strategies that reduce herbicide dependence, enhancing understanding of long-term soil health dynamics, and quantifying ecosystem service provision for valuation and policy development.

Research on CA integration with livestock systems remains limited despite widespread crop-livestock integration in smallholder systems. Understanding how to manage residue retention requirements while meeting livestock feed needs requires innovative approaches to crop-livestock

integration that optimize whole-farm sustainability.

Long-term experimental sites are essential for understanding CA dynamics that emerge over decadal timescales. Supporting continuation and expansion of long-term CA experiments should be a priority for research funding institutions.

CONCLUSION

Conservation Agriculture represents a transformative approach to sustainable agricultural intensification that addresses critical environmental challenges while enhancing productivity and profitability. The three core principles—minimum mechanical soil disturbance, permanent soil organic cover, and species diversification—create synergistic benefits for soil health, resource use efficiency, and ecosystem service provision.

Substantial evidence demonstrates that CA systems can match or exceed conventional tillage productivity while providing superior economic outcomes through reduced costs and improved resource efficiency. Smallholder farmers in Bangladesh achieved yield increases up to 28%, cost reductions up to 10%, and profit improvements up to 43%, demonstrating CA's potential to enhance food security and rural livelihoods. Environmental benefits include significant carbon sequestration, greenhouse gas emissions reductions of 26-31%, improved water quality, reduced erosion, and enhanced biodiversity.

Despite proven benefits, global CA adoption remains below potential, particularly in Asia-Pacific and sub-Saharan Africa where agriculture faces severe sustainability challenges. Barriers including technical knowledge gaps, equipment access limitations, residue management conflicts, and inadequate policy support constrain adoption. Addressing these barriers requires integrated approaches combining research, extension, technology development, and supportive policies.

The global conservation agriculture market's projected expansion from USD 13.6 billion in 2024 to USD 26.3 billion by 2033 at 8.2% annual growth reflects increasing

recognition of CA's role in sustainable food systems. Climate change pressures, soil degradation concerns, and resource scarcity will intensify demands for sustainable agricultural practices, positioning CA as a critical component of agricultural transformation.

Future prospects for CA are promising but require sustained commitment to research, capacity development, technology innovation, and policy support. Integration with precision agriculture technologies, development of viable carbon markets, and creation of enabling policy environments will be essential for realizing CA's full potential. As agriculture confronts mounting pressures to feed growing populations while protecting environmental resources, Conservation Agriculture offers a proven pathway toward sustainable intensification that merits accelerated adoption and continued innovation.

Acknowledgements:

The authors thank all contributors for their assistance in manuscript preparation.

Funding:

None.

Conflict of Interest:

No conflict of interest declared.

Author Contributions:

All authors reviewed and approved the manuscript.

REFERENCES

- DataIntel (2025). *Conservation agriculture market research report 2033*. <https://dataintel.com/report/conservation-agriculture-market>
- EOS (2023, November 1). *Crop residue management: Importance, benefits, and hurdles*. <https://eos.com/blog/crop-residue-management/>
- Food and Agriculture Organization (2024). *Conservation agriculture principles*. <https://www.fao.org/conservation-agriculture/overview/conservation-agriculture-principles/en/>

- Green Earth (2023, April 18). *10 agricultural techniques for water conservation*. <https://www.green.earth/blog/10-agricultural-techniques-for-water-conservation>
- International Rice Research Institute (2024). Use crop residues as mulches. *IRRI Rice Knowledge Bank*. <http://www.knowledgebank.irri.org/step-by-step-production/growth/soil-fertility/crop-residues-as-mulches>
- Kassam, A., Friedrich, T., & Derpsch, R. (2023). Successful experiences and lessons from conservation agriculture worldwide. *Agronomy Journal*, 115(1), 1-19.
- Tillage K. (2023, August 17). *Advantages and disadvantages of zero tillage*. <https://kellytillage.com/us/advantages-and-disadvantages-of-zero-tillage/>
- Kumar, A., Singh, R., & Sharma, P. (2024). Conservation agriculture: Effect on crop yield, soil health and carbon sequestration. *Plant Archives*, 24(1), 1-12.
- Kumar, A., Mishra, A. K., & Singh, S. S. (2025). Conservation agriculture practices for improving phosphorus use efficiency in maize-wheat systems. *Agricultural Systems*, 213, 103821.
- Lal, R., & Kimble, J. M. (1997). Conservation tillage for carbon sequestration. *Nutrient Cycling in Agroecosystems*, 49(1-3), 243-253.
- Li, Y., Song, D., Dang, P., Wei, L., Qin, X., & Siddique, K. H. M. (2023). No tillage decreases GHG emissions with no crop yield tradeoff at the global scale. *Soil and Tillage Research*, 228, 105643.
- McKinsey & Company (2024, October 15). *Global farmer insights 2024*. <https://www.mckinsey.com/industries/agriculture/our-insights/global-farmer-insights-2024>
- Nature (2024, October 9). Conservation agriculture improves soil health and sustains crop yields after long-term warming. *Nature Communications*, 15, Article 8692. <https://www.nature.com/articles/s41467-024-53169-6>
- Page, K. L., Dang, Y. P., Dalal, R. C., Reeves, S., Thomas, G., Wang, W., & Thompson, J. P. (2014). To what extent can zero tillage lead to a reduction in greenhouse gas emissions from temperate soils? *Scientific Reports*, 4, Article 4853.
- Rahman, M. A., Chaki, A. K., Sabuz, A. A., Solaiman, A. R. M., & Haque, M. E. (2023). Conservation agriculture practices improve crop productivity and farm profitability when adopted by Bangladeshi smallholders in the Eastern Gangetic Plain. *Outlook on Agriculture*, 52(1), 68-82.
- Zhang, Y., Li, Q., Chen, Y., Dai, Q., & Hu, J. (2024). Crop rotation differentially increases soil bacterial and fungal diversity. *Soil Biology and Biochemistry*, 189, 109267.